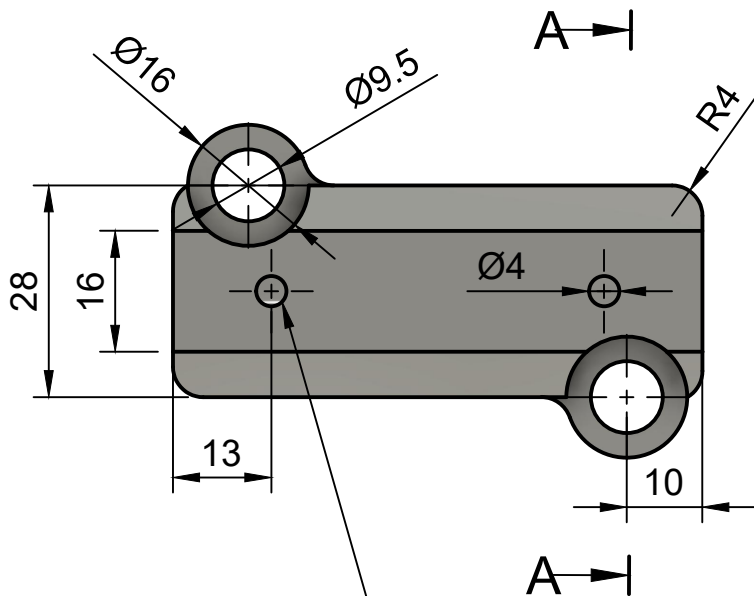
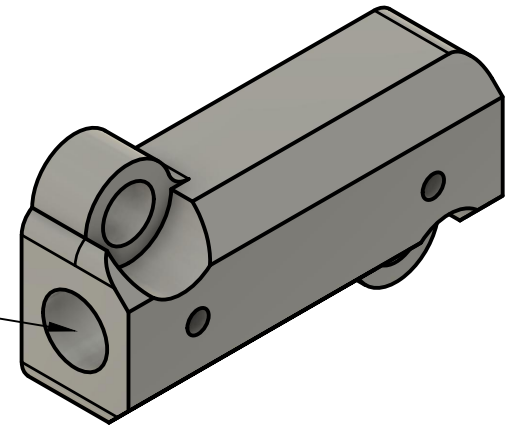
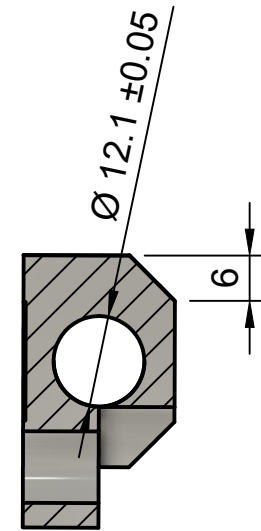


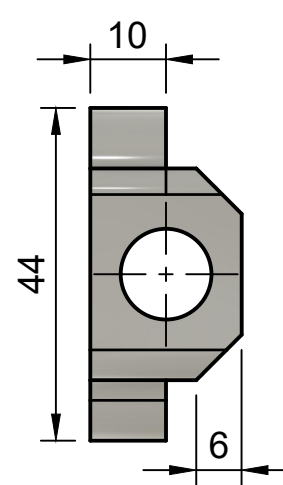
Form a shallow groove by tapping with $\frac{1}{2}$ " BSW tap (Loctite groove)



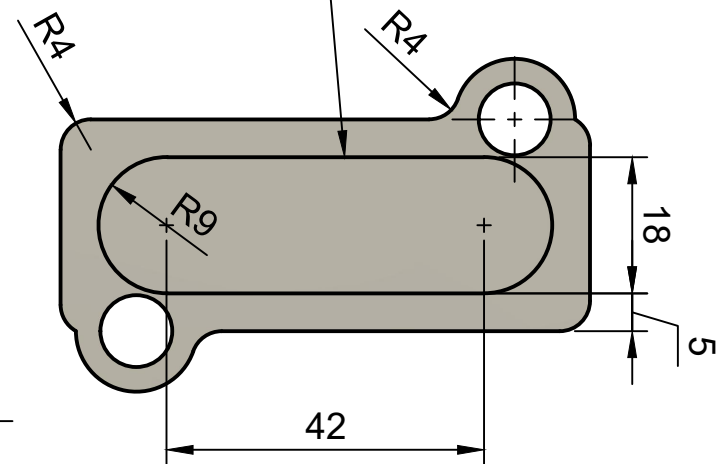
2 holes for applying
Loctite #290 to dowel pin



Section
A-A



Recess 0.2 deep.



HINGE MOUNTING BLOCK, SE2
Investment cast steel, AISI 1045
Design: GJ Fenton. Drawn: 1 Oct 2019