

Note:
Drill all holes before
slitting the jig in two.

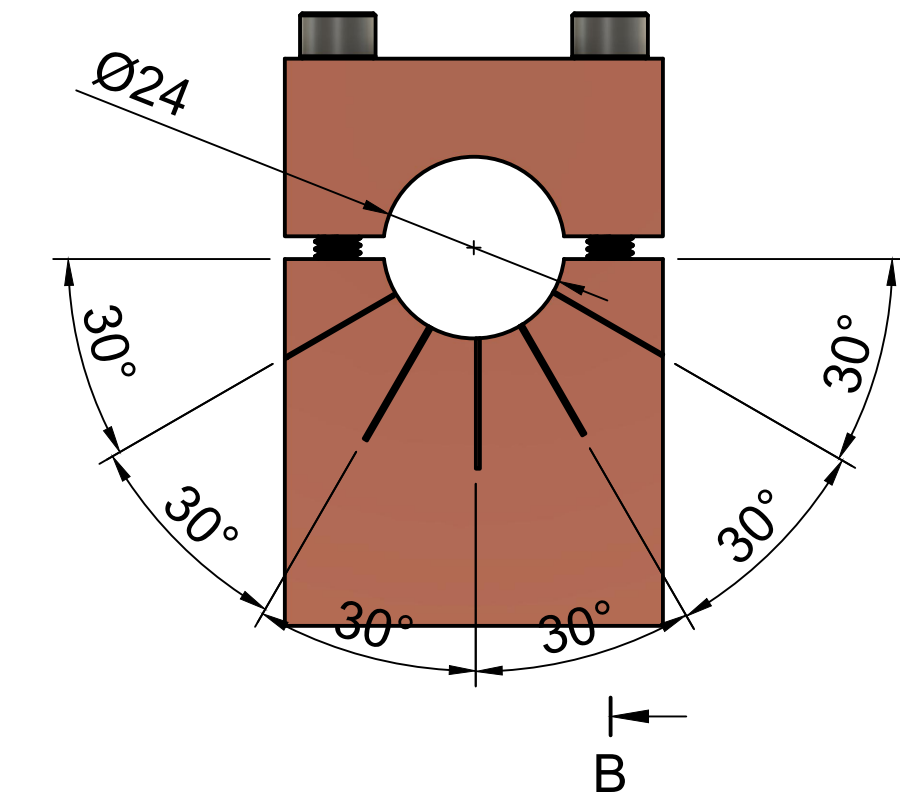
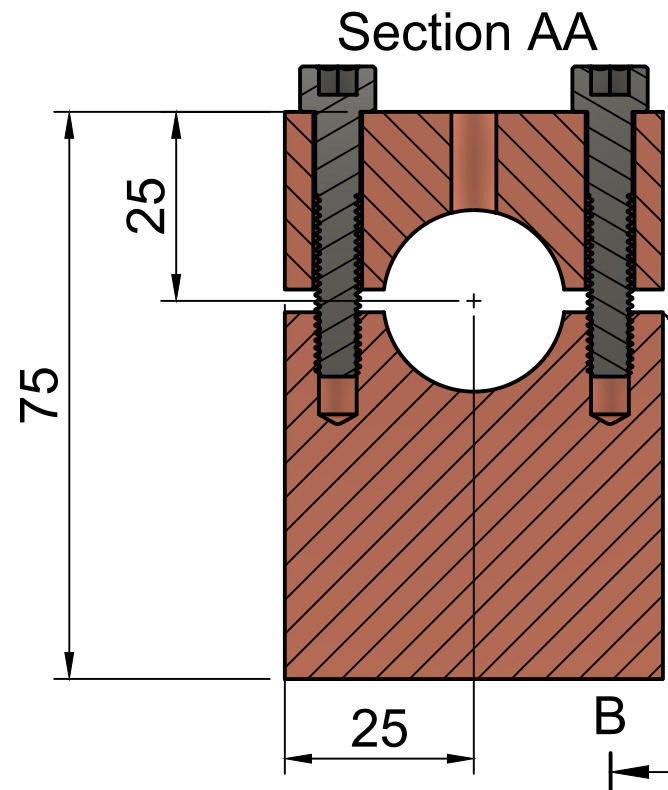
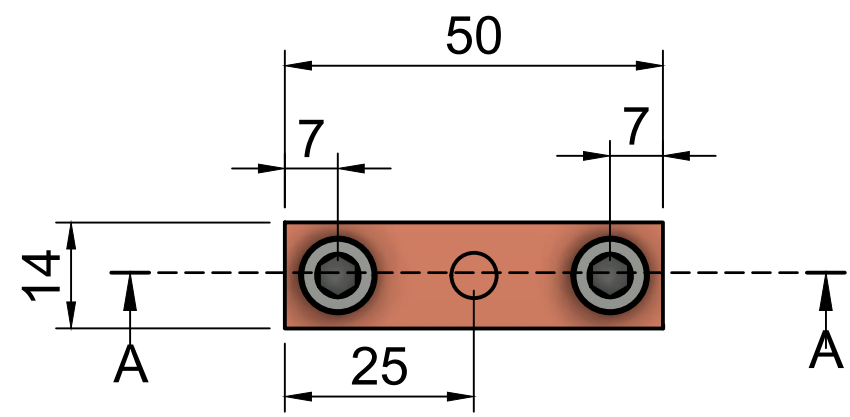
M6 SHCS, 35mm long

Dia 6mm guide hole.
This hole may be furnished
with a hardened bush
if frequent use is required.

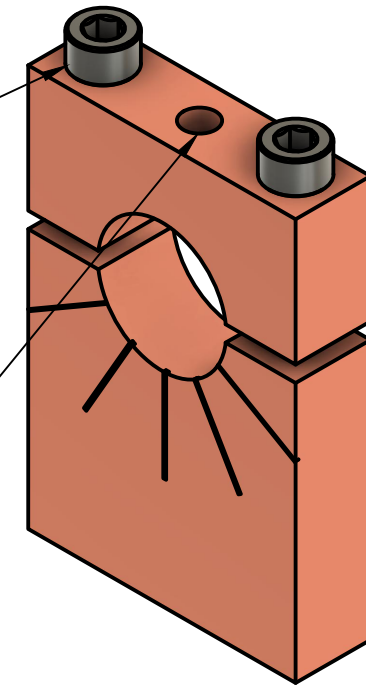
Slit, 1 to 3mm wide

Dia 6.5mm clearance hole
25 mm deep.

Tap thread M6 x 1



B-B



HEMI-HINGE / Clamping Jig
Material: mild steel
Design: A Bottomley, 15 June 2020