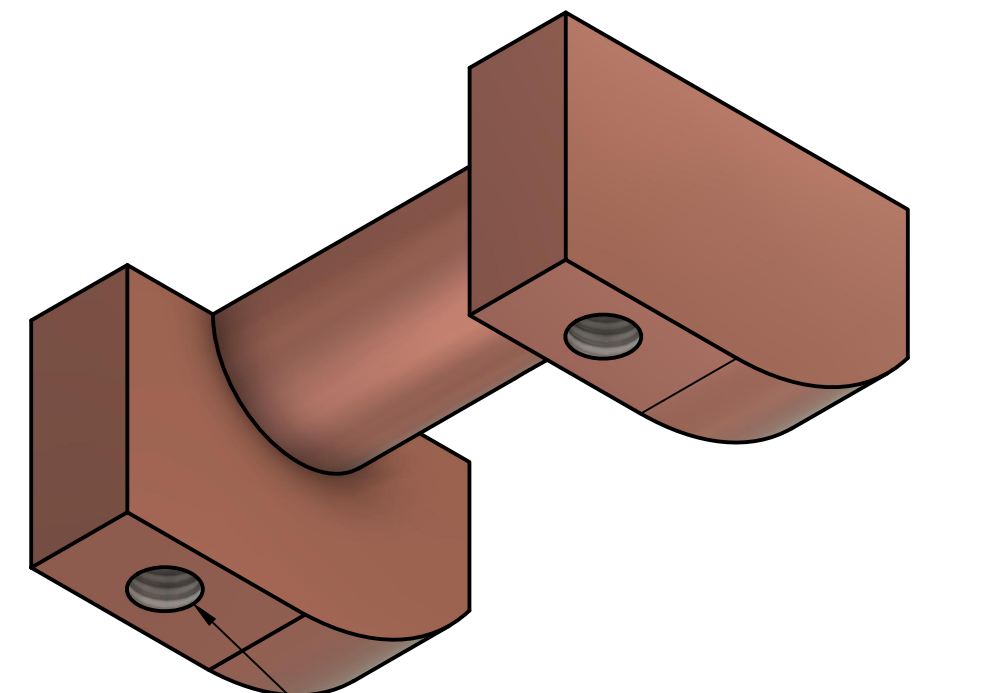
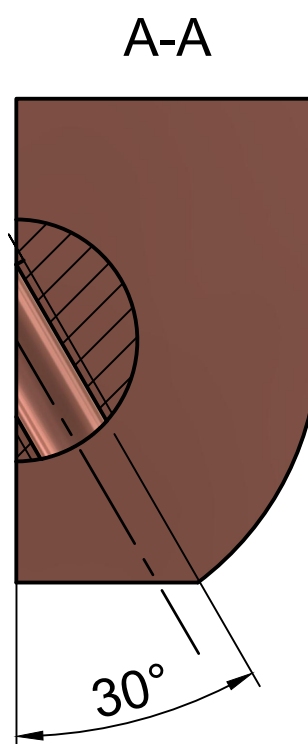
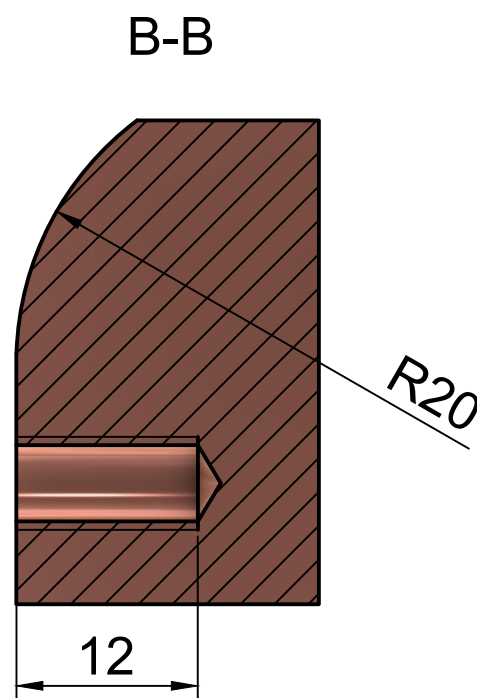


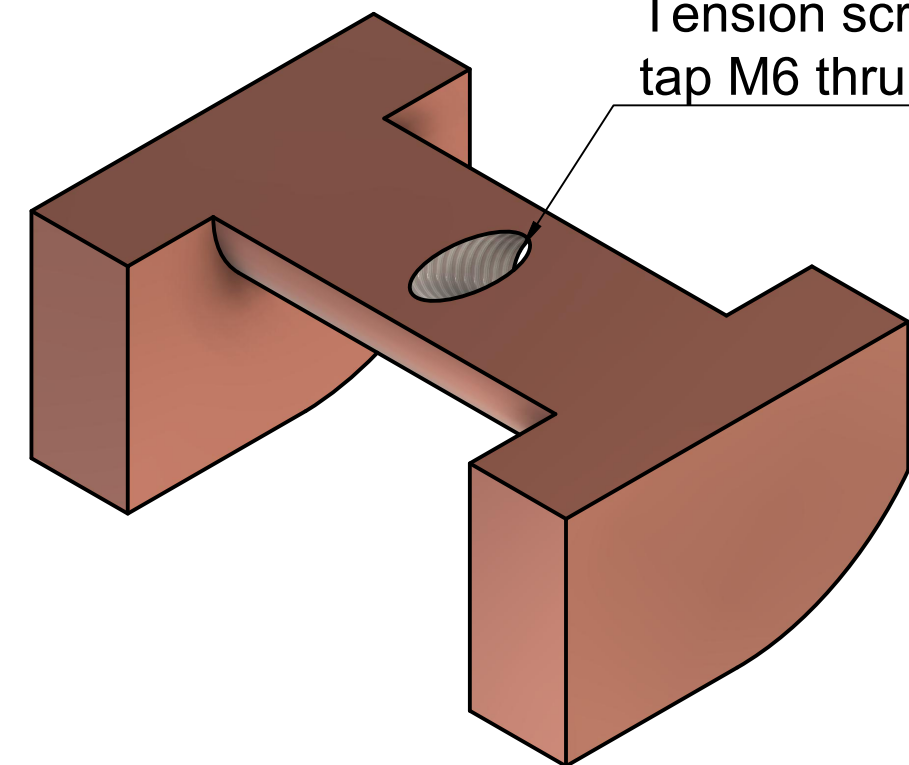
NOTE:

This part is machined as a pair clamped together in a 4-jaw chuck. The hole for the tension screw should be drilled and tapped with the pair clamped together.



Mounting holes, tap M6

Tension screw hole, tap M6 thru.



HEMI-HINGE / Pivoting Member

Material: Mild Steel

Design: A Bottomley, 20 June 2020